



THE SCARLET LETTER



Christmas is coming, the goats are getting fat!

The goats at Smoke Ham Farm, Lisa, Julie and Wendy, fat from enjoying what's left of the garden, posed for this photo after a much abbreviated "autumn."



Lisa, Julie and Wendy

Christian holidays were not common themes on historic needlework, but TSL has a few of these rare breeds, including an antique sampler picturing the Flight into Egypt with a red bearded Joseph, that arrived here recently.



Flight into Egypt

Reproduction samplers with a Christmas theme include



Harriet Ringrose



Mary Ann Hutton



Christmas Sampler



Dorcas Haynes

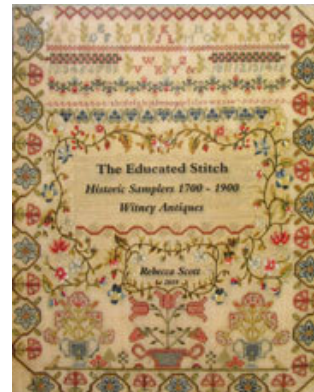
What's New



"The Educated Stitch"

WITNEY ANTIQUES NEW PUBLICATION

The majority of historic samplers that we see today were worked as part of a child's education, many in the home, but the majority worked in the classroom. They were done by children from every kind of social, economic and religious backgrounds, as illustrated in this beautiful new catalogue. Seventy eight beautifully photographed illustrations, with text, are in this 71 page full color catalogue. The first 35 purchased will receive a free chart of an English "Puzzle sampler" similar to one illustrated on Plate 40.



The Educated Stitch

\$32.00 plus \$7.50 for priority postage.

More about The Educated Stitch



MAN DOGS @ DEER



Flora and fauna were highly celebrated in nearly all 17th and 18th century pictorial embroideries. Executed entirely in cross or tent (half cross) stitches, the embroidered pictures embellished cushions and furniture and reflected a changing attitude toward domestic comforts, by serving to brighten monochromatic wood and stone interiors.



Man Dogs and Deer

More about Man Dogs and Deer



**A COUPLE IN AN
EXOTIC LANDSCAPE**

CIRCA
1700



This is an usual early 18th century needlework picture (circa 1730). The formula is similar to other examples: a couple flanking a tree, but it is usually more like a biblical "Tree of Life" with deciduous leaves and fruit, and the couples look more traditionally western. The exotic woman appears to be holding either a zither or a book: the gentleman appears to be playing a pipe as he leans on a sheep crook. All of the traditional elements are there- shepherd, shepherdess, sheep, dog, yet something is odd. The "Tree of Life" looks more like a palm tree, or possibly a tobacco plant...

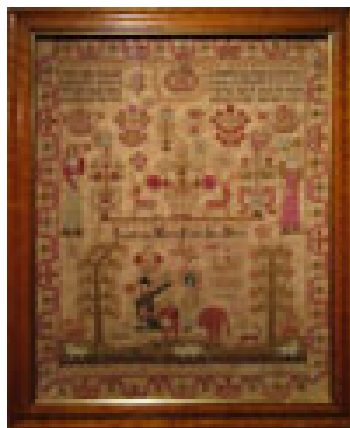


A Couple in an Exotic Landscape

[More about A Couple in an Exotic Landscape](#)



Please check our full inventory of [antique samplers](#) for new markdowns.



Mary Holtby



Janet Nicoll



Charlotte Penston



Mary Ann Chamberlin



Elizabeth Cheetham



Elizabeth Kershaw



COMING SOON



ANN JONES

Reproduction kit coming soon. Antique is shown in the photo.

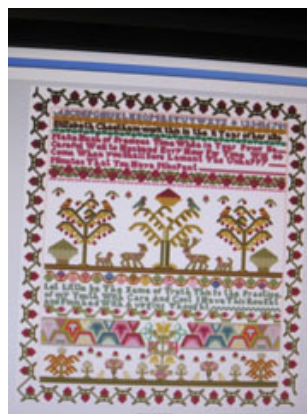


Ann Jones

ELIZABETH CHEETHAM

Elizabeth Cheetham 1776, screen shot of graph, coming soon!

Details shown below from the original sampler, available January 2020.



Elizabeth Cheetham

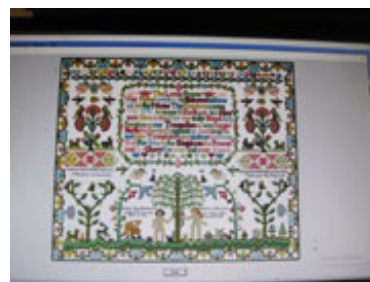


Close-ups of Elizabeth Chamberlin



ELIZABETH CHAMBERLIN

Elizabeth Chamberlin 1775, screen shot of design pictured, available December 2019



Elizabeth Chamberlin

If you'd like to see many of The Scarlet Letter's stitched models on display, you should plan to visit Lynn's of Madison, at 5928 Odana Road, Madison, WI 53719 (lynnsfmadison.com) This is where I have my samplers laced (yes- laced!) and framed. Their selection of frames is wonderful, and their workwomanship is beyond exceptional.

Have the happiest holiday season,
with love from all of the creatures at Smoke Ham Farm



©2020 The Scarlet Letter | N3157 Lundt Road, Helenville, WI 53137 | 262-593-8470

[Web Version](#)

[Subscribe](#)

[Forward](#)

[Unsubscribe](#)

Powered by
[GoDaddy Email Marketing](#)®