



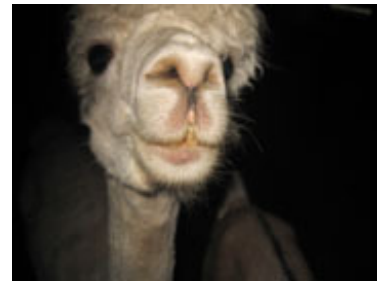
THE SCARLET LETTER



Greetings from The Scarlet Letter at Smoke Ham Farm. Mario, always curious about visitors, sends his best wishes to everyone. This summer we have hosted several groups of sampler enthusiasts.

I will be away from the office, overseas, from the 20th of September until the 1st of October. I will be able to reply to emails. Orders placed during this period of time will be filled as soon as I return to Wisconsin.

All my best,
Marsha



Mario says hi



COMING SOON



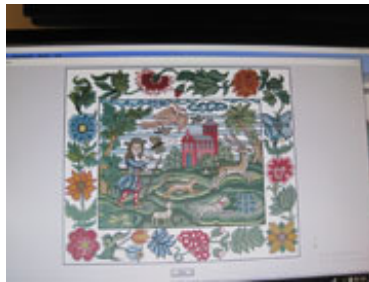
"The Educated Stitch"

This upcoming exhibition at Witney Antiques takes another step beyond their first exploration into needlework done by orphans and poor children in the nineteenth century ("Stitching in Adversity") The exhibition will open on the 14th of October, and close the 2nd of November. Details to follow in the October newsletter. (Attached photo shows one of the pieces included in the upcoming catalogue.)



MAN DOGS DEER

Man Dogs Deer is a cross stitched picture based on an early 18th century design. Available November 2019.



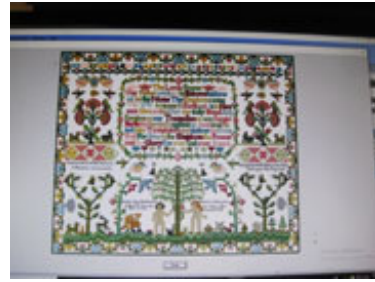
LATE 17TH/EARLY 18TH CENTURY NEEDLEWORK PICTURE

LATE 17TH/EARLY 18TH CENTURY NEEDLEWORK PICTURE of a lady and a gentleman flanking an unusual tree-perhaps a palm tree. Reproduced with permission of Witney Antiques. Available November 2019



ELIZABETH CHAMBERLIN

Elizabeth Chamberlin 1775, screen shot of design pictured, available December 2019



ELIZABETH CHEETHAM

Elizabeth Cheetham 1776, screen shot of graph, coming soon!

Details shown below from the original sampler, available January 2020.



What's New



This simple, sweet, naive English sampler has meandering floral and Greek key borders, centering a large basket of flowers and foliage. There is also a verse and inscription.

More about Mary Moss



Maria Moss



ELIZABETH GRAY 1832

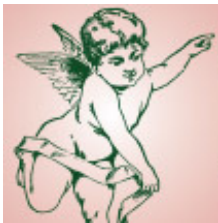


An English sampler featuring an elaborate building, "Sheffield General Infirmary" flanked by a nicely outfitted couple, standing on grassy lawns and a driveway. There is a four sided floral border, and a verse.

More about Elizabeth Gray



Elizabeth Gray



ELIZABETH EYLES



This sweet English sampler is the first I've ever seen with a border made up of flying cherubs. It also features a geode (mosaic) parrot- a distinctively stylized bird that appears on other samplers made in England, New England, and the Netherlands throughout the late 18th and early 19th centuries.

More about Elizabeth Eyles



Elizabeth Eyles



Please check our full inventory of [antique samplers](#) for new markdowns.



GDR-IHM



Ann Jones



Sarah Hyam



Mary Ann Chamberlin



Elizabeth Gray



Martha Johnson

SEPTEMBER QUIZ

Name the tomato varieties. The first person to identify all five varieties, within 24 hours of the newsletter being sent, wins the graph of their choice. Click on the photo for a larger picture. There are only five varieties in the picture and you are limited to five answers.



Quiz photo

If you have won a quiz in the past you are most welcome to participate but the prize will go to a new winner. The solution will be posted on the [puzzles page](#) after the prize is awarded. Send your answers to: samplers@scarlet-letter.com

[Scarlet Letter Website](#) | [New items](#)

©2019 The Scarlet Letter | N3157 Lundt Road, Helenville, WI 53137 | 262-593-8470

[Web Version](#)

[Subscribe](#)

[Forward](#)

[Unsubscribe](#)

Powered by
[GoDaddy Email Marketing](#)®