



# THE SCARLET LETTER



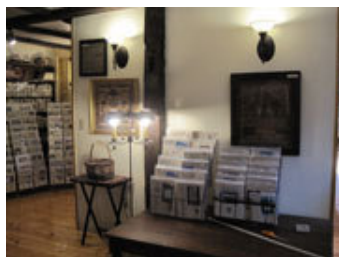
Summer's almost here, and we're more than ready for it, especially the newly shorn animals of the farm. The Open House last month was a huge success and this time almost all of the cake was eaten! I look forward to hosting another Open House in late September or early October (tba in August).



Please enjoy looking at the newest reproduction samplers and antiques in this issue of the newsletter. You'll find our May puzzle at the end of the newsletter. For sneak previews and other items of interest between newsletters, please visit us on Facebook at [scarlet-letter.com](http://scarlet-letter.com)

Wishing everyone a beautiful summer.

All the best,  
Marsha



## What's New



### ANN FORREST 1757



This very delicate Scottish sampler with its bold color scheme was designed with a four sided stylized honeysuckle border surrounding horizontal rows of illuminated alphabets and double running stitch motifs.

[More about Ann Forrest](#)



*Ann Forrest*



### SUSANNA PARKER 1761



This mid eighteenth century English band sampler features rows of alphabets, vowels, numerals, pattern bands, verses and crowns, executed in cross, petit point, eyelet and counted satin stitches.

[More about Susanna Parker](#)





## CHRISTIAN NIMMO



This sweet little sampler is very likely Scottish, as the surname "Nimmo" suggests. The reproduction is stitched on linen with cross, petit point (cross stitch over one thread of linen), straight, and counted satin stitches. This is a rare sampler made by a young boy.

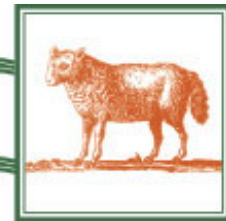
[More about Christian Nimmo](#)



*Christian Nimmo*



## GRACE KEMISH



This English sampler features a four sided honeysuckle border with one row of alphabets across the top, followed by a traditional verse.

[More about Grace Kemish](#)



*Grace Kemish*



## ELIZABETH MASTERTON



Typical of so many Scottish samplers, Elizabeth Masterton's features an abundance of initials (likely familial), rows of evergreen trees, peacocks with seven tail feathers, and the now famous mansion house fronted by a pillared fence and gates enclosing sheep.

### [More about Elizabeth Masterton](#)



*Elizabeth Masterton*



*Ann Bacon*



*Helen Miller*



*Sarah Smith*



*Caroline Phillis Critchell*



*Julia Goodchild*



*Mary Broughton*



*Ann Hawkins 1826*



*Ann Forrest 1757*

## MAY QUIZ

The first person who correctly identifies this vining plant in my back yard wins his/her choice of any Scarlet Letter graph. Click on each photo for a larger image. The second runner up will win a pair of Kelmscott scissors. The solution will be posted on the [puzzles page](#) when the puzzle has been solved. Send your answers to:

[samplers@scarlet-letter.com](mailto:samplers@scarlet-letter.com)



[Scarlet Letter Website](#) | [New items](#)

©2018 The Scarlet Letter | P.O. Box 397 Sullivan, WI 53178 | 262-593-8470

[Web Version](#)

[Subscribe](#)

[Forward](#)

[Unsubscribe](#)

Powered by  
[GoDaddy Email Marketing](#)®