



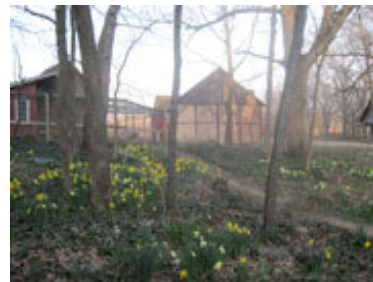
THE SCARLET LETTER



On Saturday, April 28th, The Scarlet Letter will host a small Open House. Attendance is limited to 50 guests due to space constraints. Please make a reservation with me (samplers@scarlet-letter.com), and of course it's free. You will be able to tour the gallery, the workshop, view the gardens and historic buildings of Smoke Ham Farm, and enjoy

complimentary cake from the renowned Bon Ton Bakery, and beverages. Charts, books, antique samplers, various surprise items, will be available for sale.

Unfortunately complete kits will not be available unless they are pre-ordered before April 7th, and there is no obligation to purchase them on the 28th. I'm hoping to add a few more surprises to this event (music? daffodils? baby animals?), but please be advised that there a lot of steps here, and the gallery is not handicap accessible.



SALE

Charts of these three samplers are discounted 50% while supplies last:

ANN SHORT

18TH CENTURY BAND SAMPLER

MARTHA ALLIS

MARCH QUIZ

What is my guard llama's name and when is his birthday?

The deadline to submit your guess is March 25th at 6:00 PM central daylight time. The person who has the name correct and is the closest to his birthday wins their choice of any graph from The Scarlet Letter's collection. The solution will be posted on the [puzzles page](#) after the deadline.

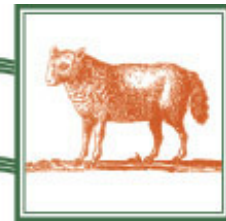


Marsha and my animal family

COMING SOON



GRACE KEMISH



Grace Kemish will be available in May 2018.

What's New



ELIZABETH MASTERTON



Typical of so many Scottish samplers, Elizabeth Masterton's features an abundance of initials (likely familial), rows of evergreen trees, peacocks with seven tail feathers, and the now famous mansion house fronted by a pillared fence and gates enclosing sheep.

[More about Elizabeth Masterton](#)



Elizabeth Masterton



A PEACOCK, A UNICORN, A BADGER

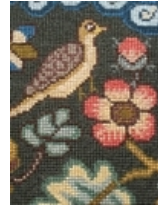


This design was inspired by an early eighteenth century English canvaswork picture executed in tent and counted satin stitches. It illustrates a stylized "Tree of Life": a brilliant example of needle-painting with the meticulous shading of embroidery threads on linen, illuminating various exotic creatures and plants, inspired by the new discoveries of mariners and men of science as excursions to the west teased and opened the minds of embroiderers more than three centuries ago.

[More about A Peacock, A Unicorn and A Badger](#)



A Peacock, A Unicorn, and a Badger



HARRIOT RINGROSE



Regarding the sampler's origins, the English name "Ringrose" is of uncertain origin, first attested in Norwich in the year 1259 as "Ringerose". It could be derived from Middle English "ring" plus "rose" but the exact meaning is not clear. It is likely that this sampler was made in northern England.



Harriot Ringrose

[More about Harriot Ringrose](#)



FANNY PEACHEY



This naive Adam and Eve sampler might have been made in Maryland around 1810. At first I believed that the sampler was either English or Irish, judging by the unusual surname, until, in my research, I came upon the gravestone of a Fanny H. Peachey, born 24 November 1799, died 11 February 1822, in the Westminster Burial Ground in Baltimore, Maryland.



Fanny Peachey

[More about Fanny Peachey](#)



ANN CARBUTT 1830



So many unusual and enigmatic features were left by Ann Carbutt on her sampler, made when she was sixteen years old, very likely in the West Riding of Yorkshire.

[More about Ann Carbutt](#)



Ann Carbutt



Ann Hawkins 1826

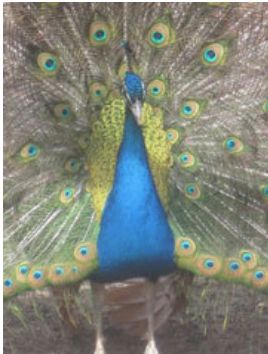


Ann Forrest 1757



Geoffrey Chaucer, The Canterbury Tales

*Whan that Aprill, with his shoures soote
The droghte of March hath perced to the roote
And bathed every veyne un swich licour
Of which vertu engendred is the flour:
Whan Zephirus eek with his sweete breeth
Inspired hath in every holt and heeth
The tendre croppes, and the yonge sonne
Hath in the Ram his halfe cours yronne.
And smale foweles maken melodye,
That slepen al the nyghte with open eye-
(So prikketh hem Nature in hir corages);
Thanne longen folk to goon on pilgrimages.*



[Scarlet Letter Website](#) | [New items](#)

©2018 The Scarlet Letter | P.O. Box 397 Sullivan, WI 53178 | 262-593-8470

[Web Version](#)

[Subscribe](#)

[Forward](#)

[Unsubscribe](#)

Powered by
[GoDaddy Email Marketing](#)®