



THE SCARLET LETTER



With every order of more than \$25.00, placed between now and the end of August, I will include the charts of two "balloon girls", reproduced from mid 19th century antique samplers formerly in the collection of The Scarlet Letter.

If you are in the vicinity of Madison, Wisconsin, please visit Lynn's of Madison at 5928 Odana Road to see many of The Scarlet Letter's finished models. Lynn has framed many of my models and offers a fantastic selection of moldings, and professional service including lacing your sampler as well as archival framing services, in addition to a huge inventory of sampler charts. "The Manifesto" is on display there in addition to many other TSL designs. You can call Lynn's of Madison for directions and hours at 608-274-1442.



The mystery plant

The first person who can identify this plant in my garden will receive his/her choice of one of the new charts featured in this newsletter. Is it a flower? Is it a weed? Help me to improve my botanical identification skills, please! Click on the photo for a larger image.

Wishing you a lovely summer,
Marsha



What's New



MARY HOOD

1768



Mary Hood

This English sampler retained its vibrant original color when I acquired it, having been conserved and de-accessioned by the Metropolitan Museum of Art. It features bold- original!- primary colors in its four sided floral border, verses, and scene with a lovely but asymmetrical brick house with dormer windows, flanked by trees.

More about Mary Hood



CAMEL AND LION



Camel and Lion

This design was inspired by an early eighteenth century English needlework picture executed in tent stitch: a magnificent example of the art of "needle painting" by the meticulous employment of silk threads on fine linen. This exotic scene illustrates foreign creatures new to the English people. This type of depiction was popular with the upper middle class audience, intrigued by the fascinating discoveries being made by explorers and men of science.

More about Camel and Lion



ELIZABETH HICKS

1765





Elizabeth Hicks

This beautiful, petite, energetic sampler expressed three fine verses and, at the end, one of the truest "signatures" I've ever read on a piece of needlework. The three verses on the sampler are separated by floral and geometric pattern bands executed in cross and counted satin stitches. The color on the front of the sampler is very nearly as bright as the back. The antique has been cleaned and conserved and is available for sale.

[More about Elizabeth Hicks](#)



Saxon Alphabet

This partial German band sampler (the lower half was evidently removed at some point in its journey to the 21st century) was probably made in Saxony, in the area of Dresden, as the style resembles others that The Scarlet Letter have reproduced from that region (titled SDW, IRS, JCS and IES 1707, to name four). It has been arranged in two columns, the left side in finer stitches than the right. The sampler features a number of horizontal pattern bands very precisely stitched, as well as elaborate alphabets which were usually used as training exercises for embellishments to towels, cuffs, pillow cases, and other household textiles.

More about the Saxon Alphabet Sampler



M. Rees

This elaborate English sampler features a fearsome tiger beneath a tropical plantation house or gazebo, covered in lush trellises and vines. This was probably stitched in either Africa or India (more likely the latter) by a British girl whose father was in the employ of an enterprise such as the East India Company, as the sampler was made before British rule in India but during the period when the EIC flourished there (1757-1858).

More about M. Rees

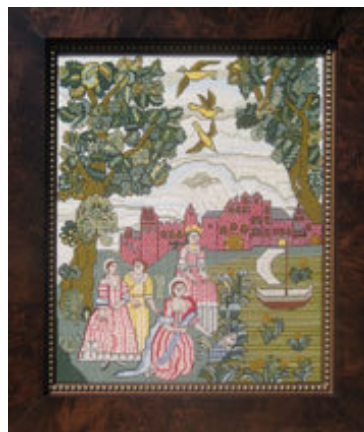




Esther Charlton

This English sampler features imposing, symmetrical red brick mansion houses flanking Adam and Eve and the Tree of Life in the upper register. In the middle register "Solomon's Temple"-like structures flank potted flowers and a large stylized tulip popping from a cornucopia of blossoms. The lower register depicts a pastoral scene with a shepherd, shepherdess and their sheep.

More about Esther Charlton



Moses in the Bulrushes

This beautiful depiction of the Old Testament story of Moses was likely made in the late seventeenth or very early eighteenth century. The lively mix of biblical story has been interpreted by the needle worker through her contemporary lens (note the rambling red brick late Tudor/early Stuart buildings and the fashionable clothing of the women-apart from their rather clumsy sandals) as they gather the baby from

the river.

[More about Moses in the Bulrushes.](#)



“PALLA” Chalice Cover



Palla Chalice Cover

This small textile originally made in the late 15th or early 16th century, is called a "palla" (chalice cover), stitched on a linen ground. The center show the face of Christ with a golden halo, framed by a narrow guilloche band and a large Latin inscription in Gothic lettering which translates as "Hail the holy face INRI the Redeemer."

[More about the Palla Chalice Cover](#)





Elizabeth Hicks



M. Rees

[Click to see more Antique Samplers for sale](#)



[Scarlet Letter Website](#) | [New items](#)

©2017 The Scarlet Letter | P.O. Box 397 Sullivan, WI 53178 | 262-593-8470

[Web Version](#)

[Subscribe](#)

[Forward](#)

[Unsubscribe](#)

Powered by
[GoDaddy Email Marketing](#)®