



# THE SCARLET LETTER



*Yonder comes the Powerful king  
of day: Rejoicing in the east.  
Together let us tread  
The morning dews and gather  
in their prime: Fresh blooming flowers.*



## SUMMER 2016 NEWSLETTER

### What's New



The Milkmaid



Eleanor Holmes



Hannah Turner



## THE MILKMAID



From before the early eighteenth century, a change in attitudes regarding nature in western art evolved, resulting in a bucolic, pastoral ideal: an inhabited landscape, lush with flowers and fruits, featuring shepherds and farming activities, usually with a hint at romance. The actual lives of the shepherds and farm workers depicted were exaggerated and romanticized to the extreme. This ideal sort of landscape as depicted in many eighteenth and early nineteenth century art works can be attributed to the Romantic movement, rather a broad artistic and aesthetic concept that appreciated a return to Nature in its purest elemental sense. Wordsworth defined Romanticism in reference to poetry as "emotion recollected in tranquility". It represents a place to escape from the rigors of the real world: an idealized world where roses grow as tall as trees, and sheep and cows munch languidly in ever-fruited orchards.



*The Milkmaid*

### More about the Milkmaid

---



Eleanor Holmes stitched this sampler when she was twelve years old using a variety of stitches including cross over one and two threads of linen, four-sided, eyelet, and cut and drawn work in the outermost border.

### More about Eleanor Holmes

#### Eleanor Holmes Antique Sampler



*Eleanor Holmes*

---



Betsy Adams's sampler was designed after a piece stitched in eastern Massachusetts in the last quarter of the eighteenth century. It incorporates many traditional sampler motifs popular during that century.

### [More about Betsy Adams](#)



*Betsy Adams*



A year before Queen Victoria was crowned, Ann Walton stitched a pair of sweet little samplers depicting a young boy and a girl at play. The boy is holding a hoop and a stick, and the girl holds what appears to be a basket in one hand and a bouquet in the other.

### [More about Ann Walton](#)



*Ann Walton*



This highly unusual Scottish sampler retains its brilliant color on both front and back and incorporates many traditional motifs found on Scottish samplers as well as some unique variations. Stitches used in the sampler are eyelet (over sixteen threads), queen and cross.

[More about Margaret Muir](#)



*Margaret Muir*

---

## HANNAH TURNER

### Antique Sampler

Born in 1841, Hannah Turner made this sampler at the unusually advanced age of eighteen years. It features a grandiose version of Solomon's Temple surrounded by flying angels, birds perched in trees, pots of flowers, stags, dogs, and two human figures, with a four sided floral border.



*Hannah Turner*

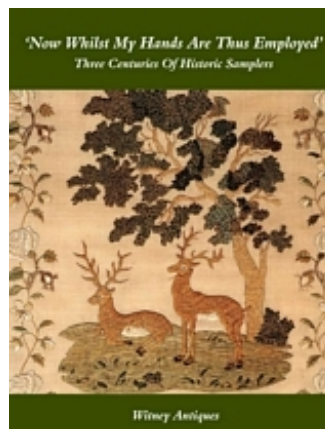
---

[More about Hannah Turner](#)

# NOW WHILST MY HANDS ARE THUS EMPLOYED

## Witney Antiques Exhibition Catalog

A new exhibition catalog will be available from Witney Antiques in June titled "Now Whilst My Hands Are Thus Employed". The samplers in the catalog cut across all levels of society embracing both the affluent and the poor and stands as a testament to the skill and perseverance of the young and their talented teachers. Whether worked with a view to future employment, for pleasure or in order to be the mistress of a large household, they illuminate the lives of girls and young women going back over 300 years.



*Now Whilst My Hands Are Thus Employed*

[More about the exhibition catalog](#)

---

## Sneak Previews

### BLESSED ARE THE SONS OF PEACE

#### A Needlework Picture inspired by early eighteenth century examples

The model for "Blessed Are the Sons of Peace" is being stitched by Sigrid Eckel. Thank you so much for sharing your skills, Sigrid. Below are details from the new original design which will be available in August 2016.



*Blessed are the Sons of Peace*





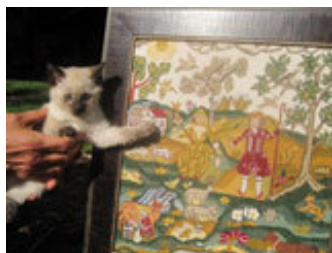
## CATHERINE BUCHANAN

Catherine Buchanan stitched this sampler in 1798. Here are a few details of her sampler, which should be charted and available in September 2016. The verse on the sampler reads:

*Yonder comes the Powerful king  
of day: Rejoicing in the east.  
Together let us tread  
The morning dews, and gather  
in their Prime: Fresh blooming  
flowers*

Once this sampler has been charted, the antique will be available for sale.

### More photos of Catherine Buchanan



*My new kitten Hector pointing to the cat in the new Milkmaid picture*



*Alpaca Mario sniffing newborn Spanky*

©2016 The Scarlet Letter | P.O. Box 397 Sullivan, WI 53178 | 262-593-8470

[Web Version](#)

[Subscribe](#)

[Forward](#)

[Unsubscribe](#)